

Export ETABS V9 Files to PERFORM-3D

ETABS v9 models may be [exported](#) to [PERFORM-3D](#) through the process which follows:

1. Run analysis within ETABS.
2. Select File > Export > Perform 3D Text File. This operation creates a text file which will then enable interoperability between the platforms.
3. Within PERFORM-3D, define groups for the various element types to be [imported](#) from the text file, as shown in Figure 1:

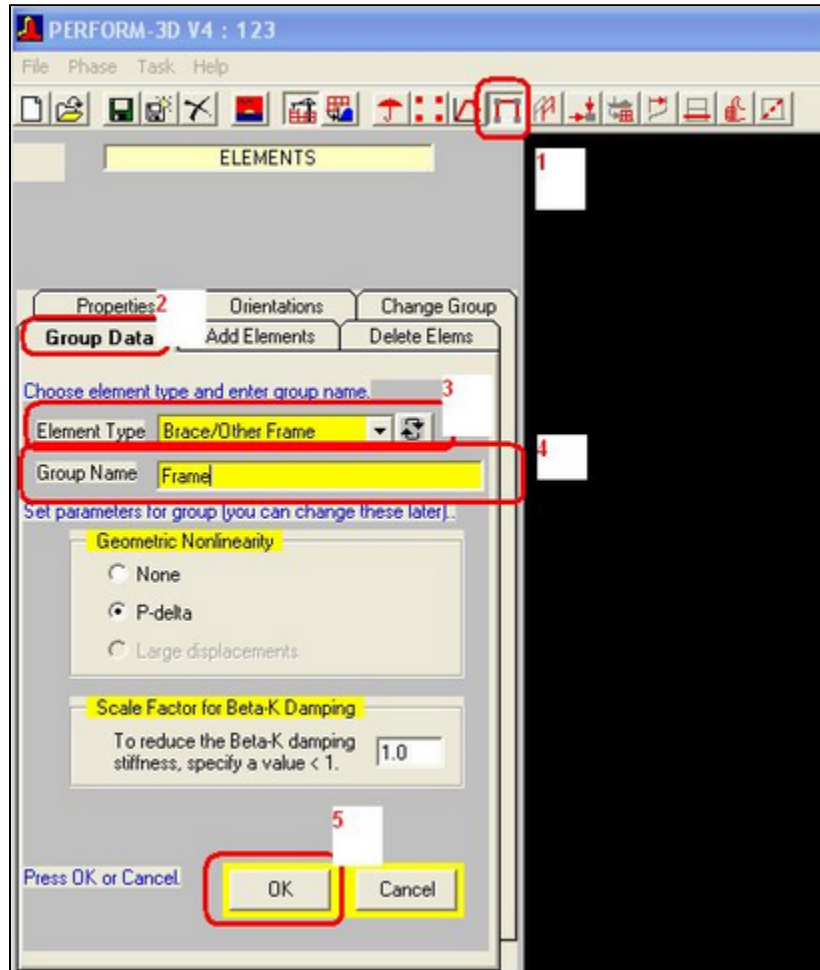


Figure 1 - Group definition within PERFORM-3D

Open the model within PERFORM-3D by selecting Task > Import/export structure data, as shown in Figure 2:

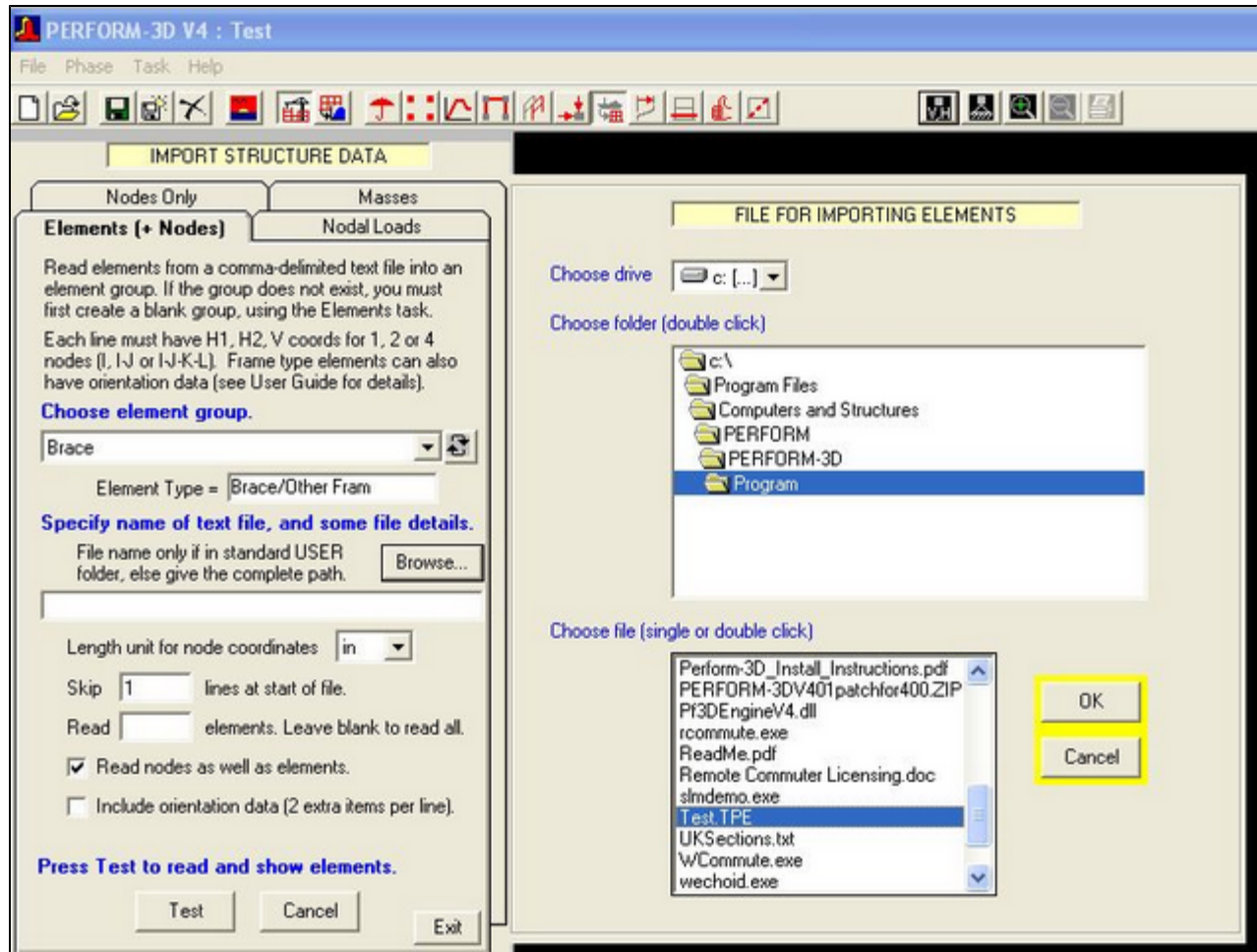


Figure 2 - Open the model within PERFORM-3D

Why are the menu commands grayed-out?

Answer: The element model is exported from ETABS to PERFORM-3D. When the element model is unavailable, menu commands are grayed-out. Menu commands may be activated by either running analysis, which creates the element model, or by selecting this option under View > Set Display Options.