

Steel-frame pipe rack

Tutorial	
Name:	Steel-frame pipe rack
Description:	A detailed and extensive procedure which describes the modeling, analysis, and design of a 3D steel-frame pipe rack system.
Program:	SAP2000
Version:	
Model ID:	na

This tutorial, presented in the PDF below, guides users through a detailed modeling, analysis, and design process for a six-bay steel-frame pipe rack structure supporting air-cooled heat exchangers.

The PDF file for this tutorial may be accessed through the [Pipe rack tutorial](#) (PDF) link.

The elevation and plan views shown in Figures 2 and 3 illustrate the structural system modeled in the tutorial. While following the tutorial, it may be useful to have these plans available to assist with modeling.

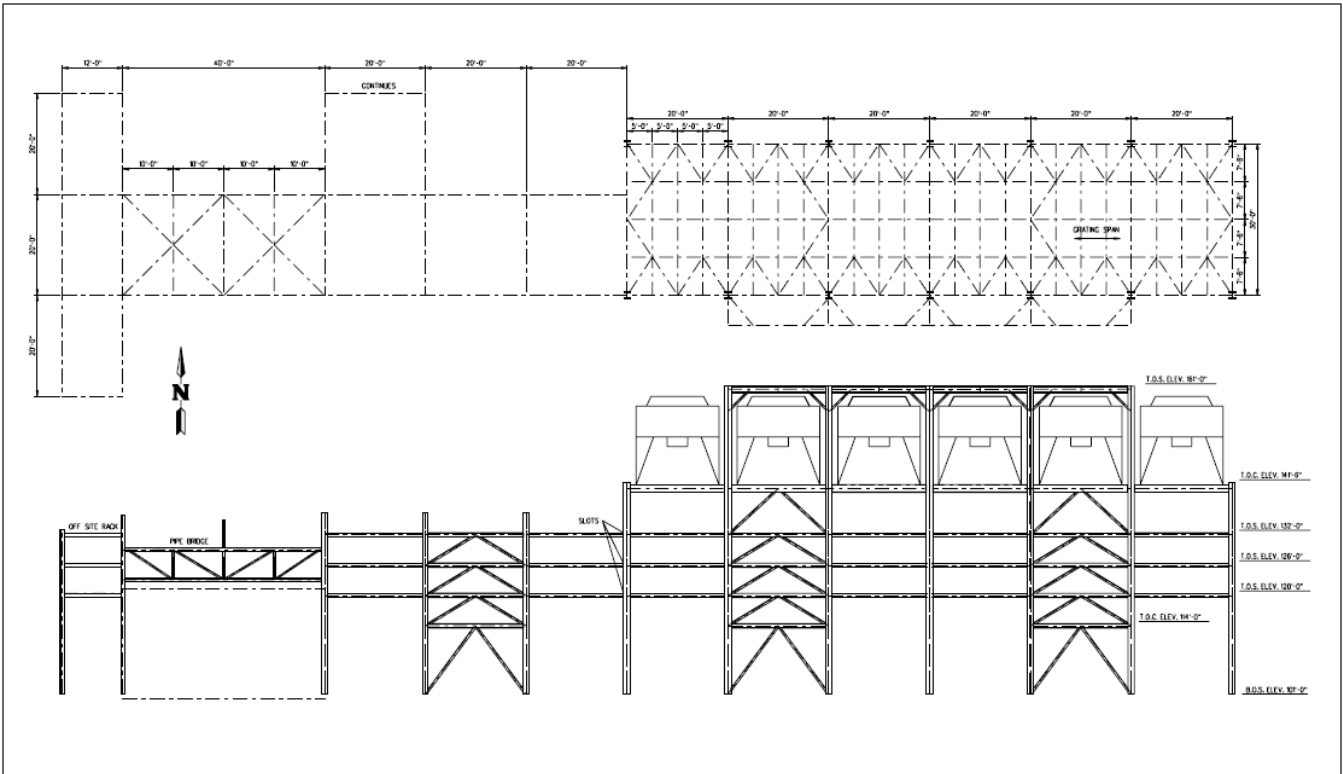


Figure 1 - North elevation and plan

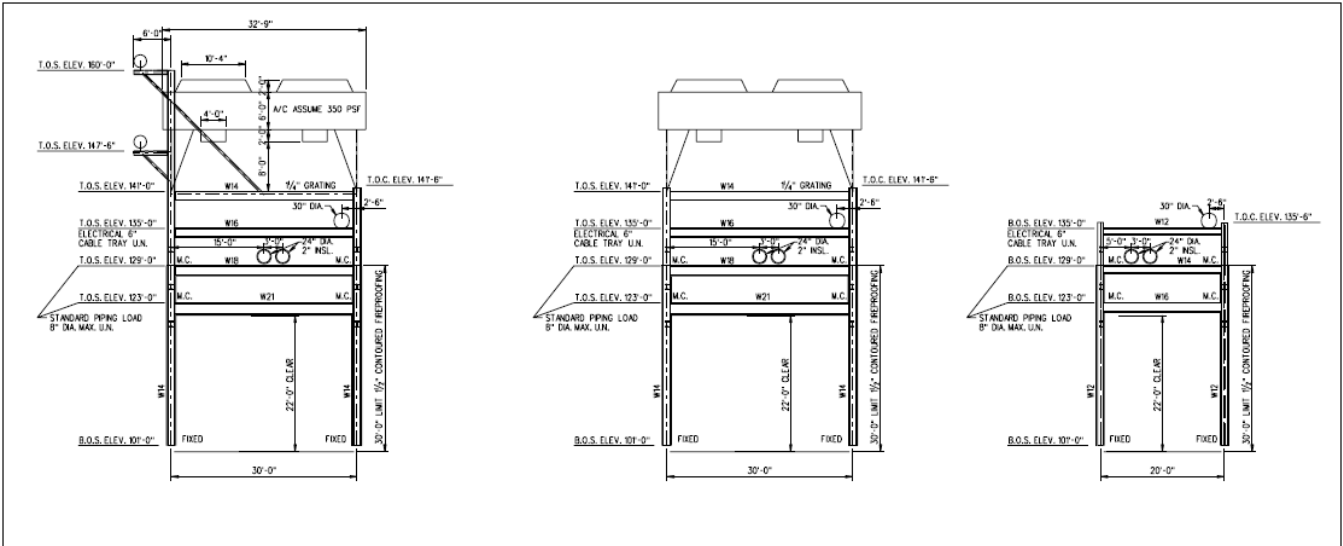


Figure 2 - West elevation and sections

Attachments

- [Pipe rack tutorial \(PDF\)](#)
- [Figure 1 - North elevation and plan \(PDF\)](#)
- [Figure 2 - West elevation and sections \(PDF\)](#)