

Displaying vehicle location causing maximum effect in influence-based moving load analysis

The vehicle location causing governing force effect can be displayed in tabular format by using the "Show Vehicle Location" function on the "Bridge Object Response Display" form as shown in Figure 1.

This function is available only for moving loads applied to bridge models created by the parametric bridge modeler.

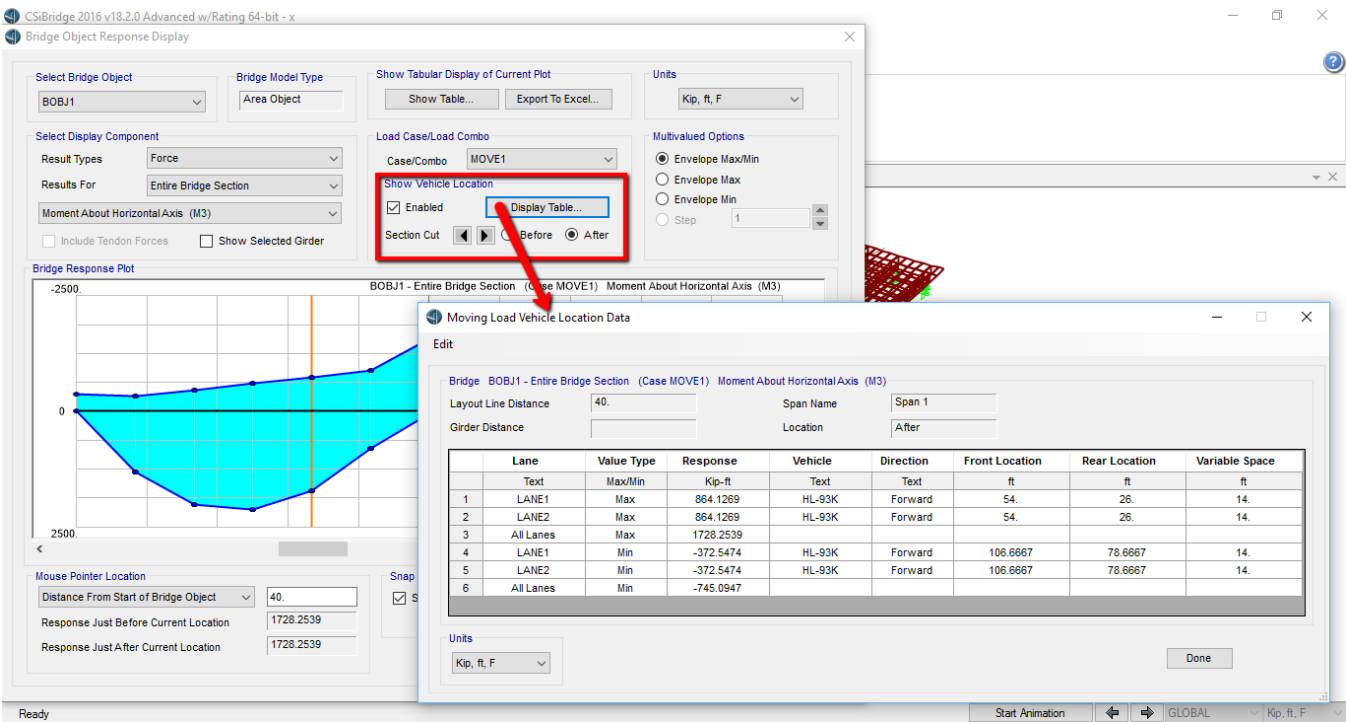


Figure 1: Displaying vehicle location causing maximum effect

For manually created models, you could determine the critical vehicle location from step-by-step moving load analysis by finding the step for which the response of interest is maximized and then correlating such step to the vehicle location, based on vehicle starting distance, speed and load discretization.