


Interaction diagram

 The two sections below describe how **interaction diagrams** may be plotted for reinforced-concrete columns using [SAP2000](#).

Plotting interaction diagram from design results

- Design a [frame](#) object with a reinforced-concrete cross section and longitudinal reinforcement.
- Run analysis and [design](#).
- Display design information using the Design > Concrete Frame Design > Display Design Info command.
- Right-click on the desired member to open the Design Information menu.
- Select Interaction to display the interaction surface and interaction diagram, as shown in Figure 1:

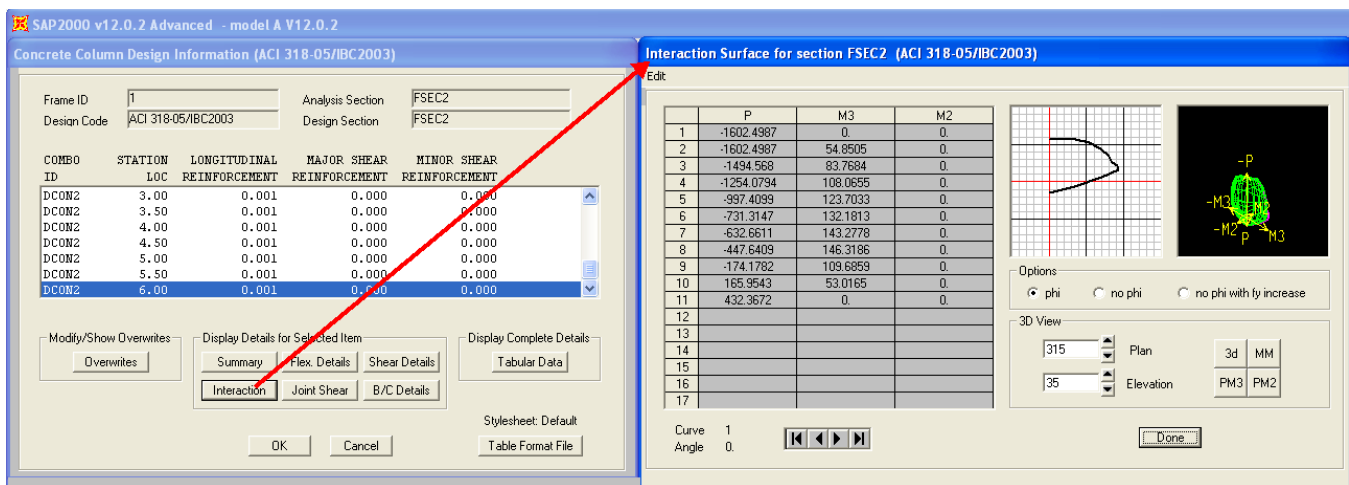


Figure 1 - Plotting interaction diagram from design results

Plotting interaction diagram in the Section Designer

- Use the [Section Designer](#) to define a section with reinforcement.
- Open the section in the Section Designer and select Display > Show Interaction Surface to display the interaction surface, as shown in Figure 2:

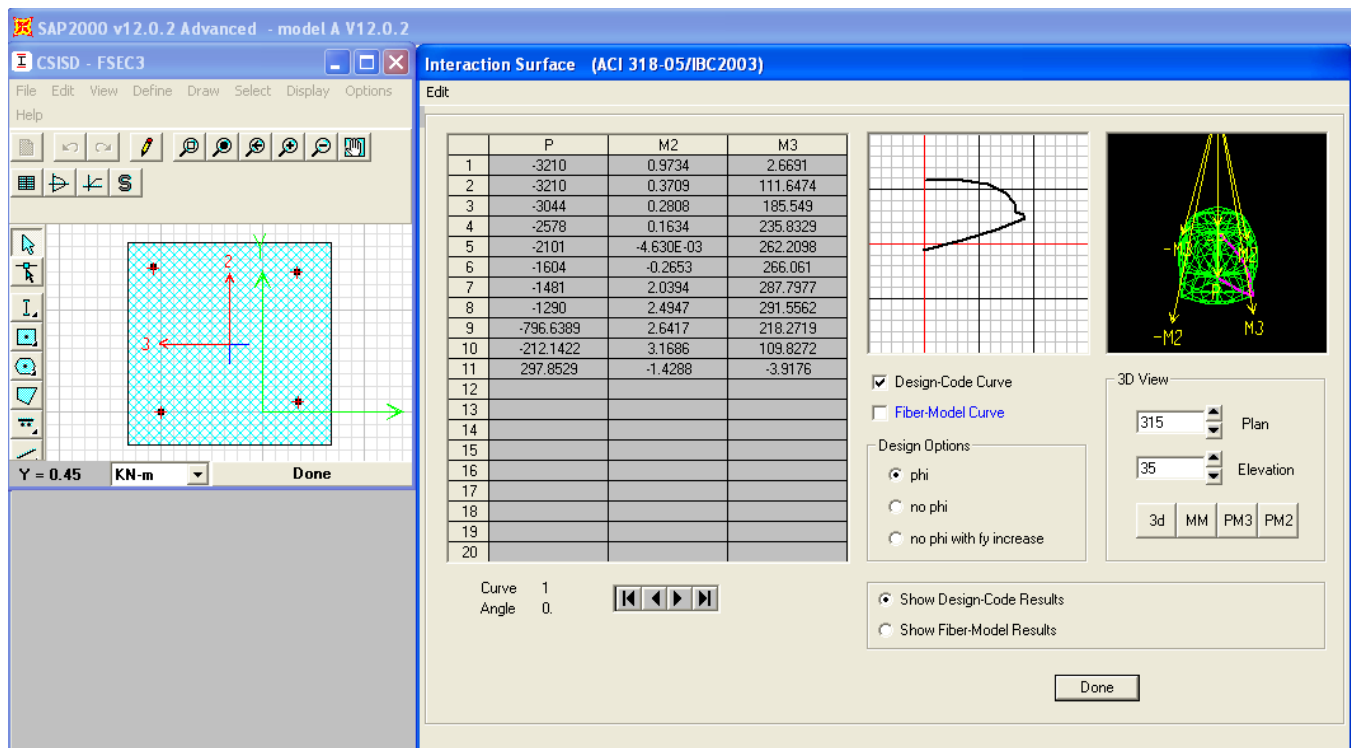


Figure 2 - Plotting interaction diagram in the Section Designer

See Also

- [Interaction diagram FAQ page](#)