

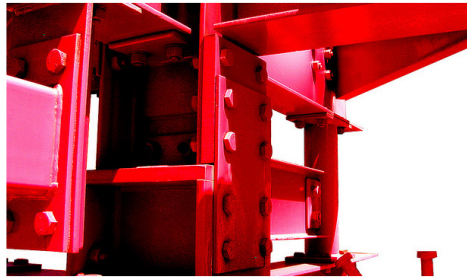
Modeling techniques



Modeling techniques useful to [CSI](#) Software application are presented in this section.



[1]



[2]



[3]

Related Content

Articles

Tutorials

- [Cold-formed steel truss](#)
- [Locate center of mass](#)
- [Modeling a pin connection between crossing members](#)
- [Reinforced-concrete column and beam design](#)
- [Steel-frame pipe rack](#)
- [Vibrating-machinery steel skid on piles](#)

Test Problems

- [Human-induced vibrations](#)

See Also

- **Efficient modeling techniques** – [Using the graphical user interface](#) tutorial

Attribution

- [1] – Photo by Doug Kerr, March 11, 2012 - Retrieved from [Flickr](#) under [Creative Commons, CC BY-SA 2.0](#) licensing
- [2] – Photo by Manop, April 30, 2007 - Retrieved from [Flickr](#) under [Creative Commons, CC BY-SA 2.0](#) licensing
- [3] – Photo by Will Culpepper, May 26, 2002 - Retrieved from [Flickr](#) under [Creative Commons, CC BY-SA 2.0](#) licensing