

Defining lanes from frames in CSiBridge

Tutorial

Name:	Defining lanes from frames
Description:	Describes procedure for defining lanes from frames in CSiBridge.
Program:	CSiBridge
Version:	17.3.0
Model ID:	na

This tutorial shows how to define lanes from frames in CSiBridge.

Referring to Figure 1, lanes from frame can be defined via "Layout > Lanes > Click Diagonal Arrow in the Bottom Right Corner > Add New Lane Defined from Frames" command.

Although it is possible to define lane from frames in CSiBridge, it is always recommended to define lanes from layout lines, as this will enable more realistic load distribution as discussed in the [Lane definition using layout lines or frames](#) article.

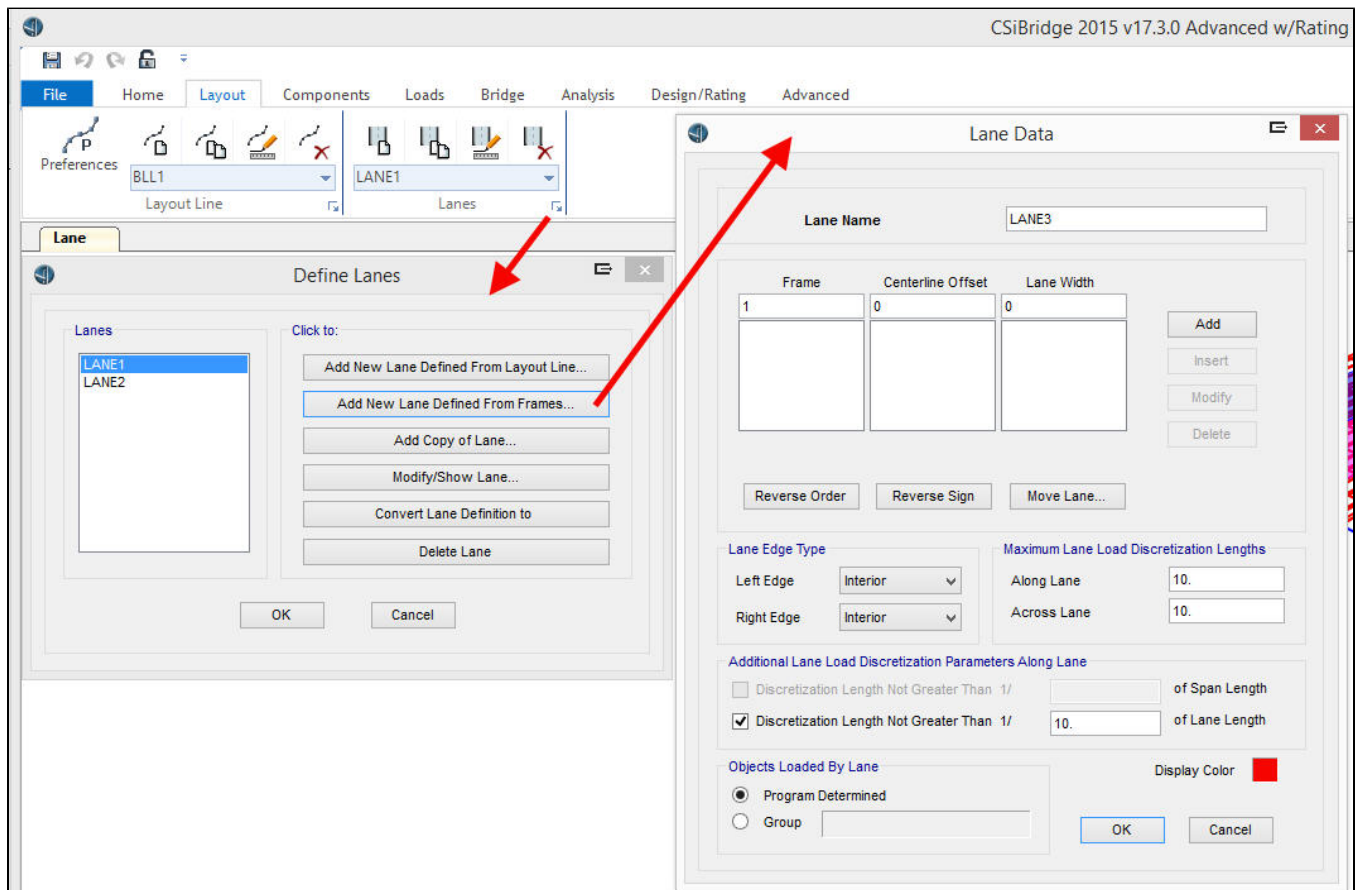


Figure 1: Adding Lanes defined from frame in CSiBridge