

Influence-based moving-load analysis first steps (SAP2000)

Tutorial

Name:	Influence-based moving-load analysis first steps
Description:	Procedure for initiating influence-based moving-load analysis.
Program:	SAP2000
Version:	12.1.0
Model ID:	na

Influence-based [moving-load](#) analysis is initiated through the following process:

- Define [Vehicle](#) type through Define > Bridge Loads > Vehicles.
- Define vehicle class through Define > Bridge Loads > Vehicle Classes.
- Define the [lane](#) through Define > Bridge Loads > Lanes.
- Define a moving-load [case](#) through Define > Load Cases > Add New Load Case. Set the load-case type to Moving Load, then specify the vehicles and lanes assigned to this moving load, as shown in Figure 1:

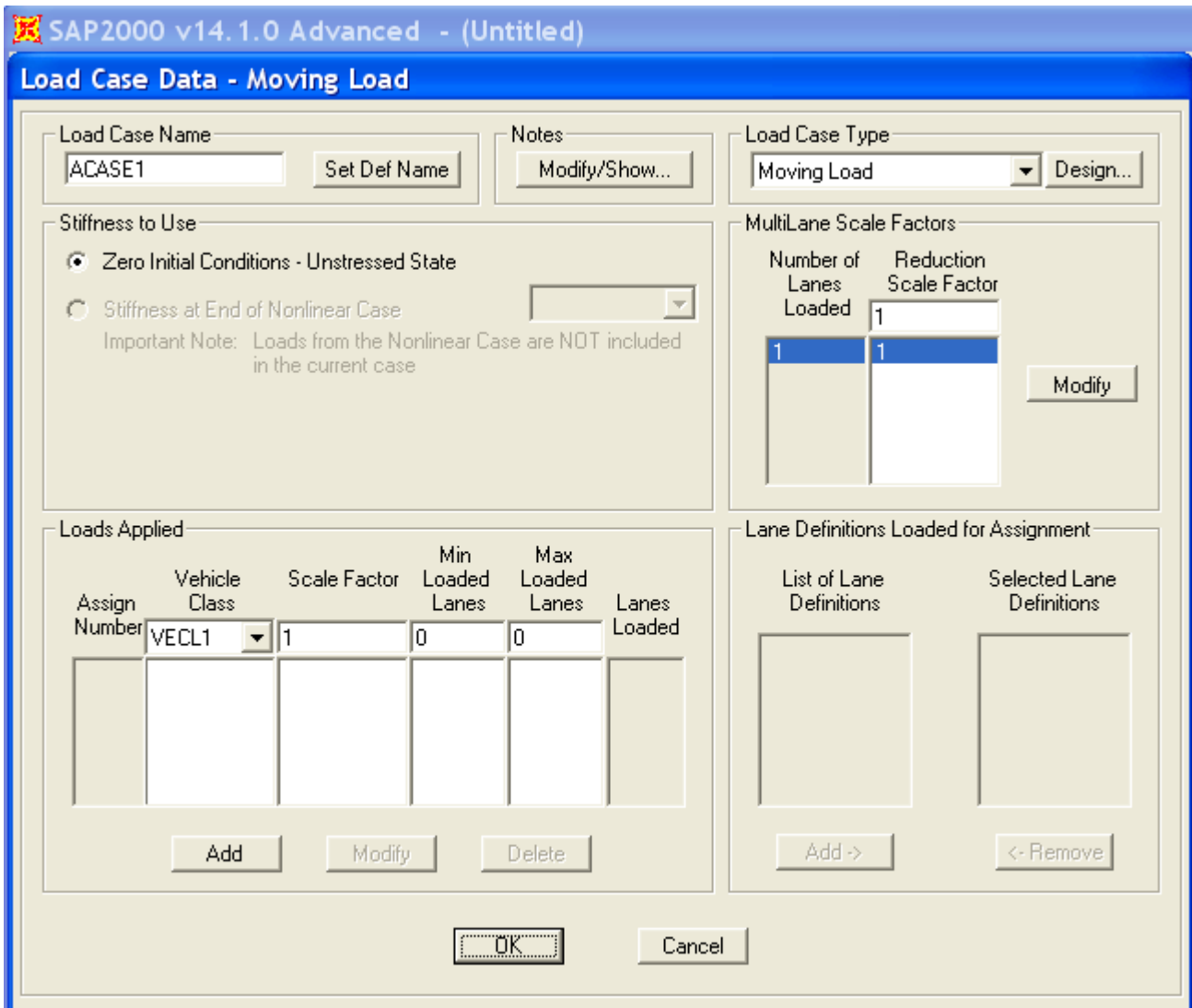


Figure 1 - Load-case data

See Also

- [Influence-based moving-load analysis first steps \(CSiBridge\)](#)
- [CSI Analysis Reference Manual](#), Chapter "Moving-Load Analysis"