

# Influence-based moving-load analysis first steps (CSiBridge)

Tutorial	
Name:	Influence-based moving-load analysis first steps (CSiBridge)
Description:	Procedure for setting up influence-based moving-load analysis.
Program:	CSiBridge
Version:	18.0.1
Model ID:	

Influence-based [moving-load](#) analysis can be setup using the following procedure:

- Define [Vehicle](#) through "Loads Tab > Vehicles > New"
- Define vehicle class through "Loads Tab > Vehicle Classes > New". Note that default vehicle class is automatically added for each vehicle.
- Define [layout line](#) via "Layout Tab > Layout Line > New"
- Define [lane](#) via "Layout Tab > Lane > New"
- Define a moving-load [case](#) via "Analysis Tab > Load Cases > New". Set the load-case type to Moving Load, then specify the vehicles and lanes assigned to this moving load, as shown in Figure 1:

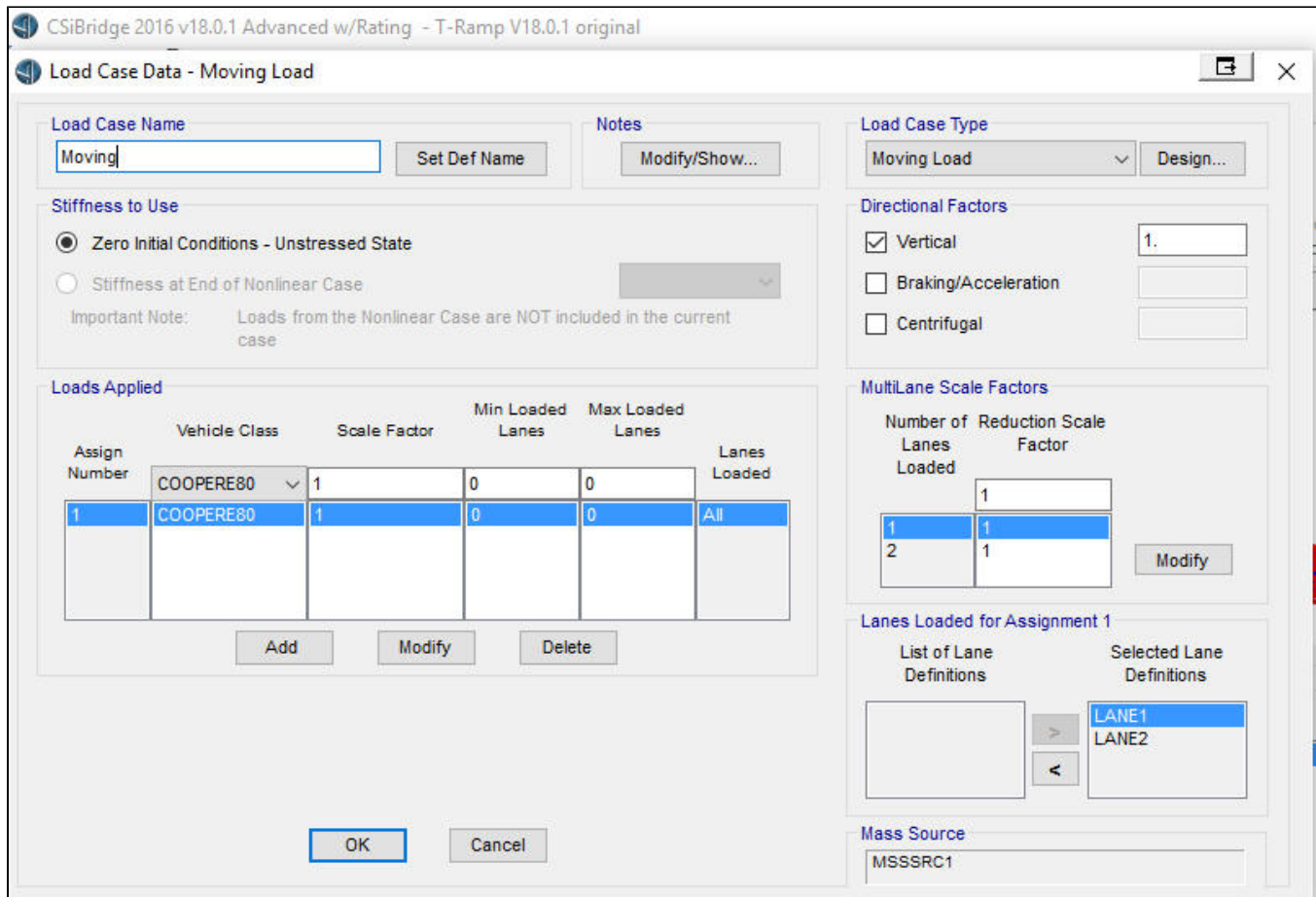


Figure 1: Moving load case definition

## See Also

- [CSI Analysis Reference Manual](#) , Chapter "Moving Load Analysis"