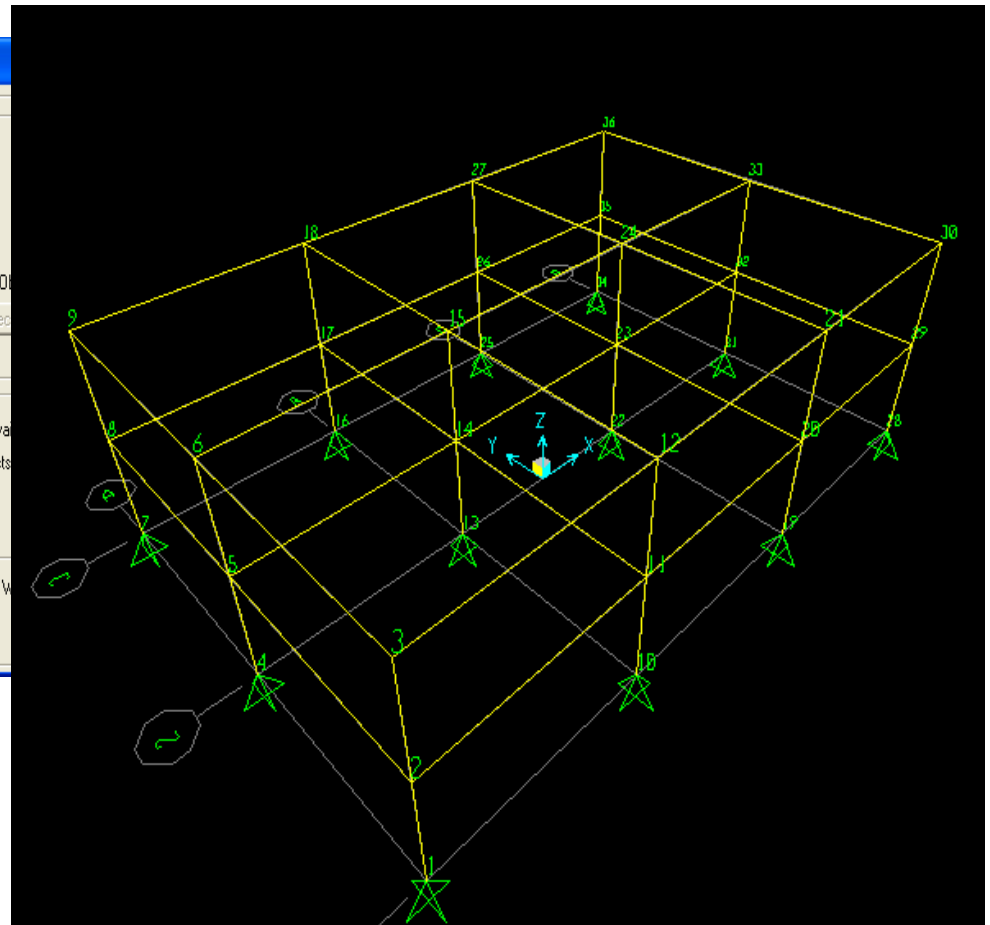
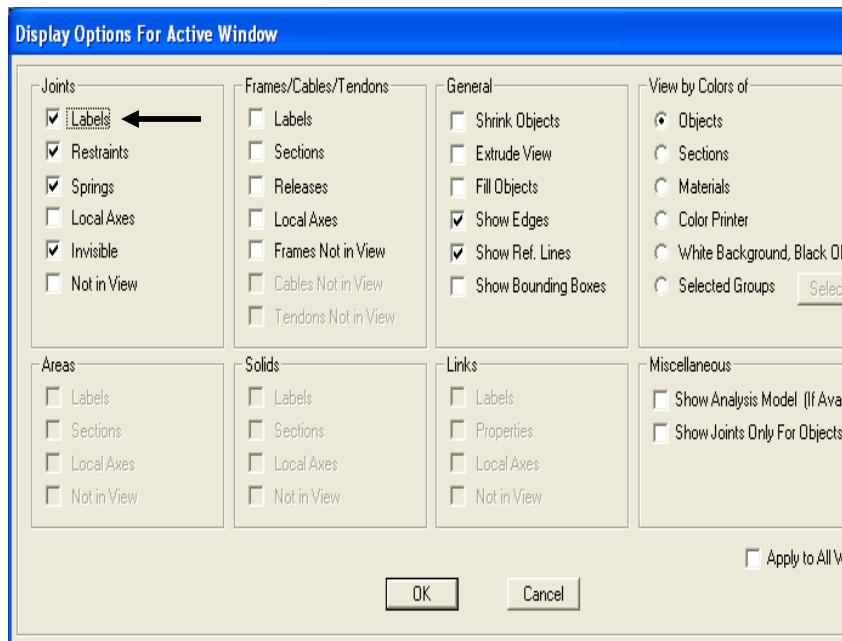
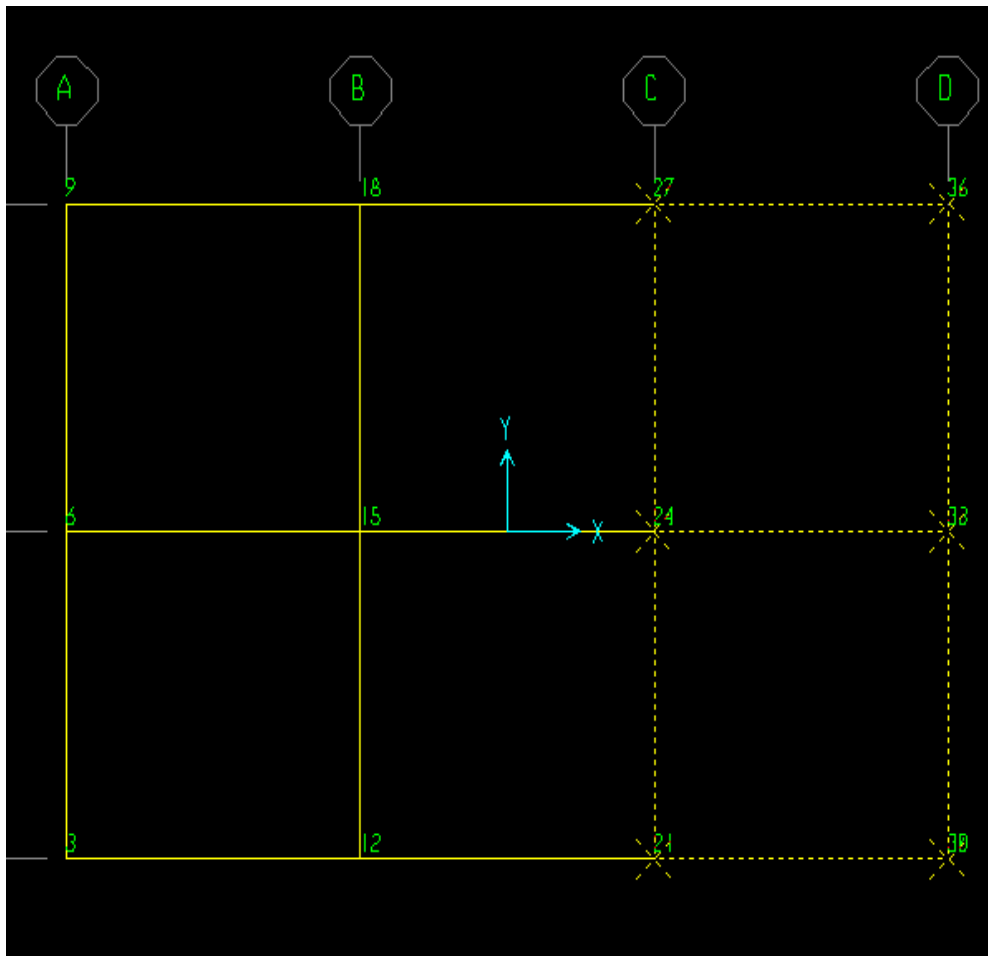


Click 'Set Display options' button or click Ctrl E on the keyboard, then checkbox the Joint "labels" option as shown to view joint labels. Users can then select portions of their model to relabel with or without alpha characters



Next, from the main menu use Edit>Change Labels to change the labels of the selected joints. In this example, I changed the “Item Type” to *Element Labels – Joint*, adding the Prefix ‘North’ with Next number 5 with an an increment of 5. Note that you can control the labeling order by direction



Interactive Name Change

Edit View

Choose A Named Item Type

Item Type: **Element Labels - Joint**

List Names of Selected Elements Only

Auto Relabel Control

Prefix: North First Relabel Order: Z

Next Number: 5 Second Relabel Order: Y

Increment: 5 Minimum Number Digits: 0

Name List for Element Labels - Joint

	Current Name	New Name
1	21	21
2	24	24
3	27	27
4	30	30
5	33	33
6	36	36

OK Cancel

Next, use the Edit menu on the Interactive Name change dialogue as shown to renumber/relabel the joints as shown below right

Interactive Name Change

Edit View

- Cut Ctrl+X
- Copy Ctrl+C
- Paste Ctrl+V
- Delete Del
- Copy All In Data Grid
- Find Ctrl+F
- Replace Ctrl+R
- Reset To Current Names
- Auto Relabel**
 - All In List
 - Highlighted In List

Item Type: Element Labels - Joint

First Relabel Order: Z

Second Relabel Order: Y

Increment: 0

Name List for Element Labels - Joint

	Current Name	New Name
1	21	21
2	24	24
3	27	27
4	30	30
5	33	33
6	36	36

OK Cancel

Interactive Name Change

Edit View

Choose A Named Item Type

Item Type: Element Labels - Joint

List Names of Selected Elements Only

Auto Relabel Control

Prefix: North

First Relabel Order: Z

Next Number: 5

Second Relabel Order: Y

Increment: 5

Minimum Number Digits: 0

Name List for Element Labels - Joint

	Current Name	New Name
1	21	North5
2	24	North15
3	27	North25
4	30	North10
5	33	North20
6	36	North30

OK Cancel

Joints relabeled / renumbered. You can use this option to relabel frames and other parameters also

